

GT Detector

Cat No. GT-12101

Human Profiling in Forensic Cases, Parentage Identification and Research Use

Remarkable Features

- ✓ Multiplex amplification of 17 loci in a single reaction.
- ✓ Contains all 13 CODIS Core loci (2009).
- ✓ Covers 11 European Standard Set (ESS) loci (2016).
- ✓ Sex determination using Amelogenin marker.
- ✓ Designed in a 5-dye system.
- ✓ Compatible with Applied Biosystems™ 310, 3130/xl, 3500/xl and SeqStudio platforms.
- ✓ Applicable to a variety of DNA sources– blood, hair, bone, saliva, etc.
- ✓ Direct amplification using Genetek products like DNA Banking Card (DBC), DBC Blue, Blood Lysis Buffer (BLB).
- ✓ GT Detector comes with all the necessary reagents to perform multiplex PCR plus GT Detector allelic ladder, GTM5 matrix standard and GT500 size standard in a single competitive price.

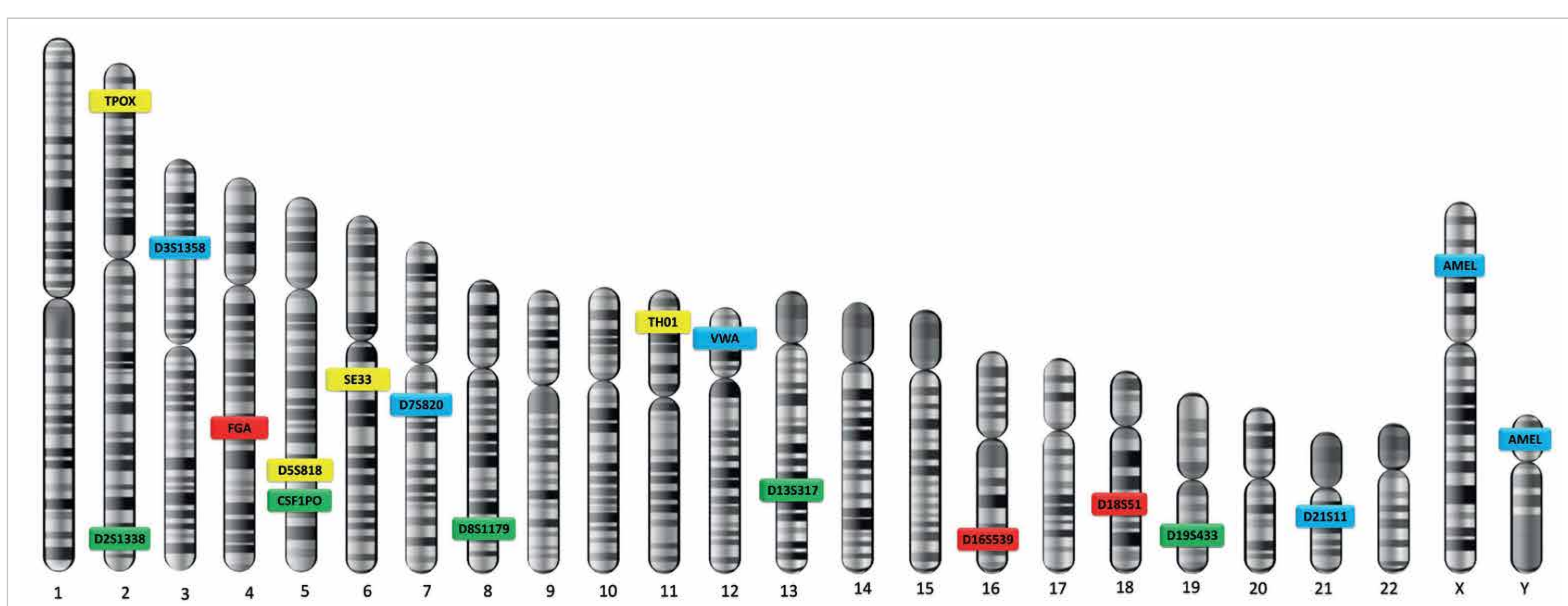


Figure 2. Chromosomal locations of GT Detector markers

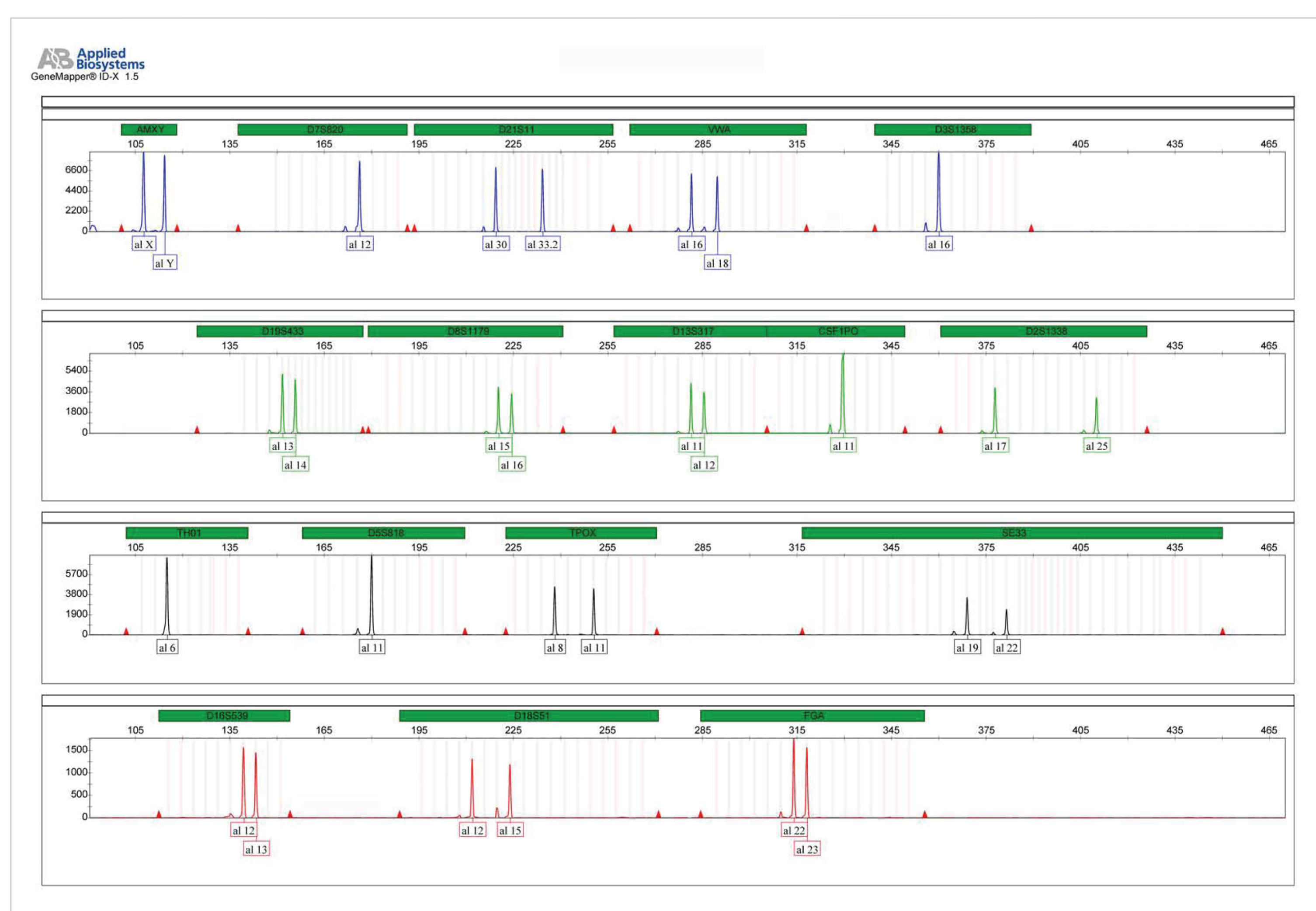


Figure 3. A profile of the Control DNA provided with GT Detector. One ng of DNA has been amplified using the kit.

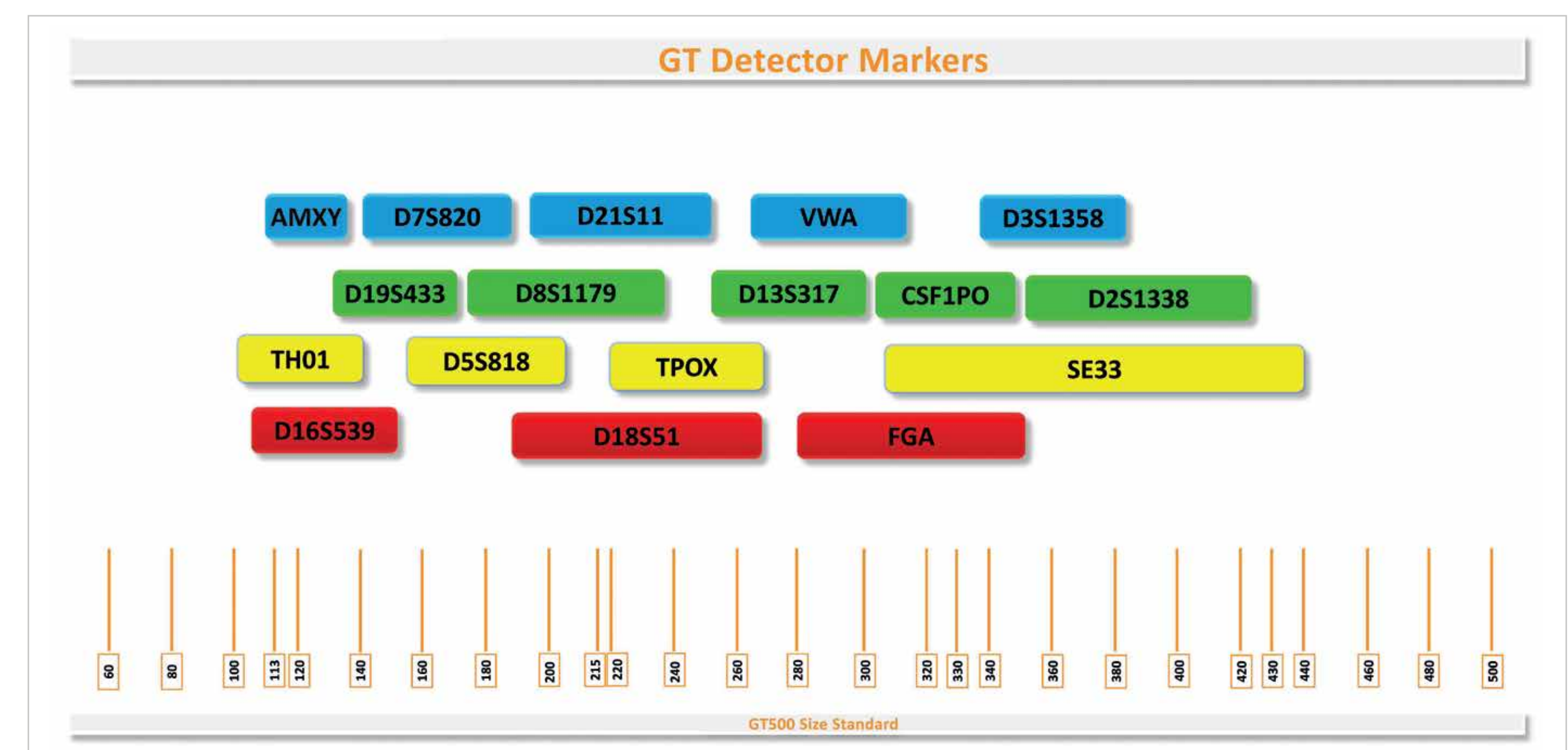


Figure 1. Map of GT Detector markers

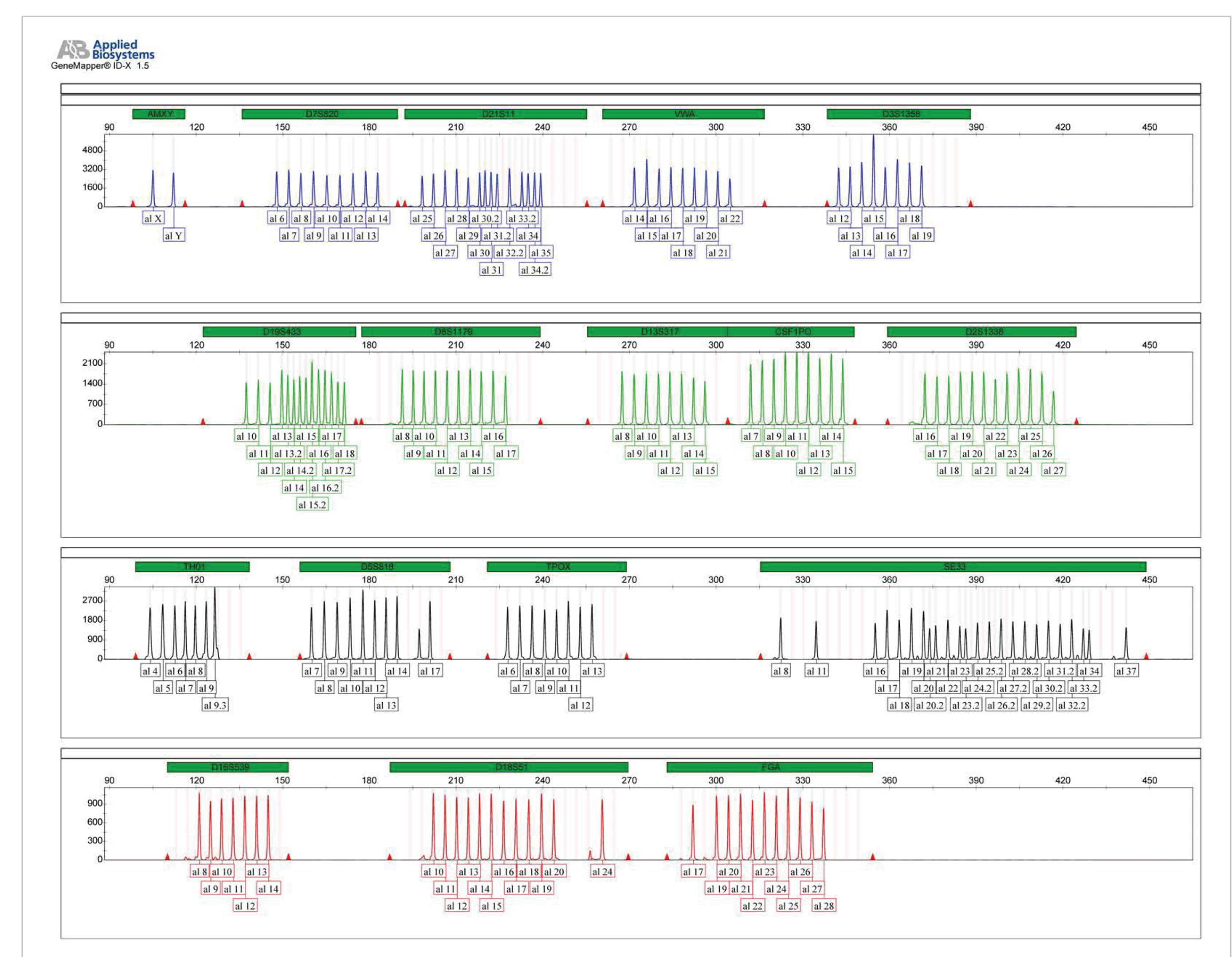
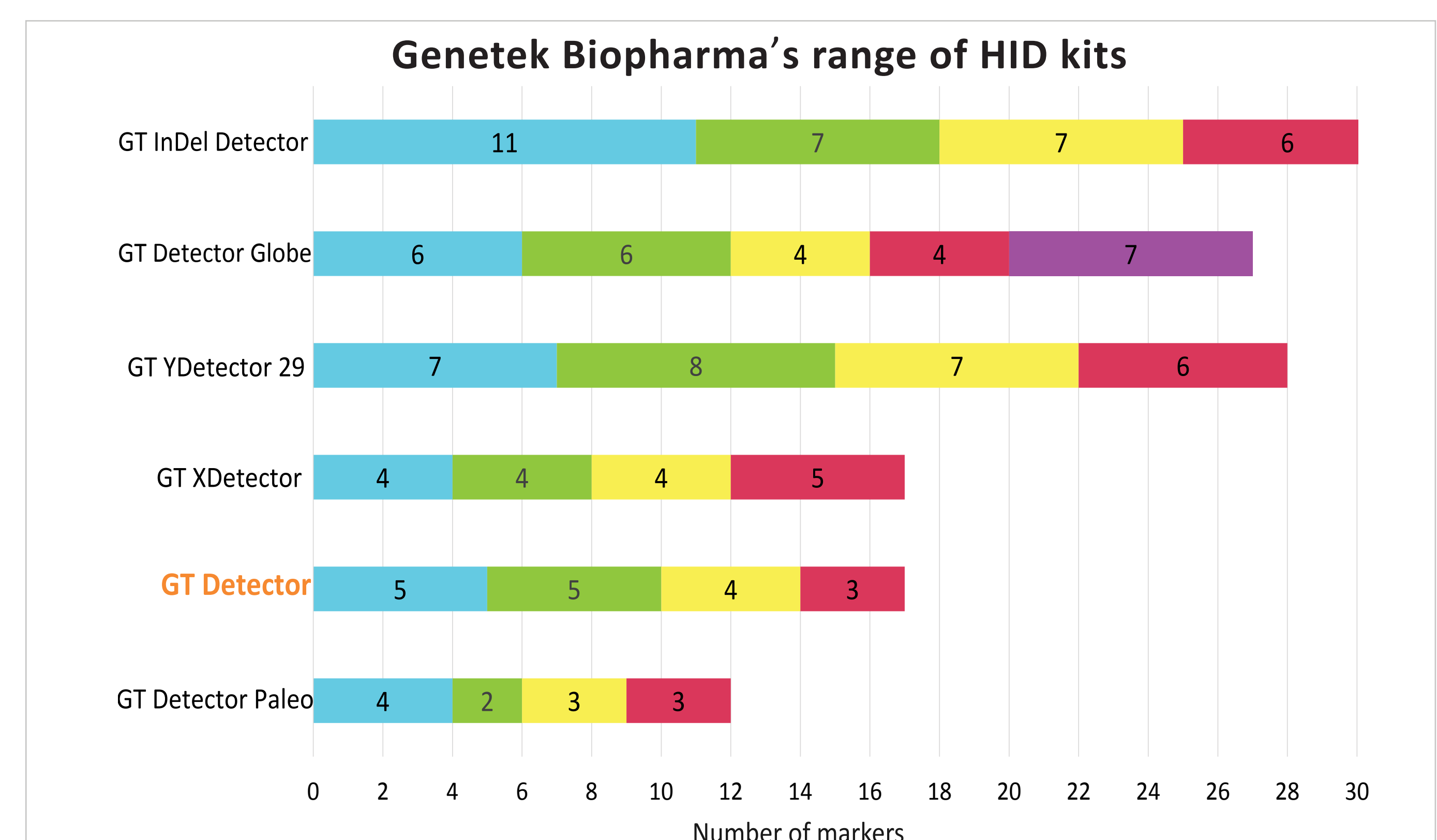


Figure 4. GT Detector allelic ladder



For Research Use Only

For further information please contact us via info@genetek.de
More details on Genetek products are available on our website: www.genetek-biopharma.com