

# GT Detector Paleo

Cat No. GT-12501

An Efficient Human Identification Tool for Profiling Old or Degraded DNA Samples

## Product Features

- ✓ Multiplex amplification of 12 markers.
- ✓ Contains all Core CODIS loci.
- ✓ Sex determination using Amelogenin marker.
- ✓ Designed in a 5-dye system.
- ✓ Compatible with Applied Biosystems™ 310, 3130/xl, 3500/xl and SeqStudio platforms.
- ✓ Applicable to a variety of DNA sources – blood, hair, bone, saliva, etc.
- ✓ Markers are optimized to work well on degraded low quality DNA.
- ✓ Direct amplification using Genetek products like DNA Banking Card (DBC), DBC Blue, Blood Lysis Buffer (BLB).
- ✓ GT Detector Paleo comes with all the necessary reagents to perform multiplex PCR plus GT Detector Paleo allelic ladder, GTM5 matrix standard and GT500 size standard in a single competitive price.

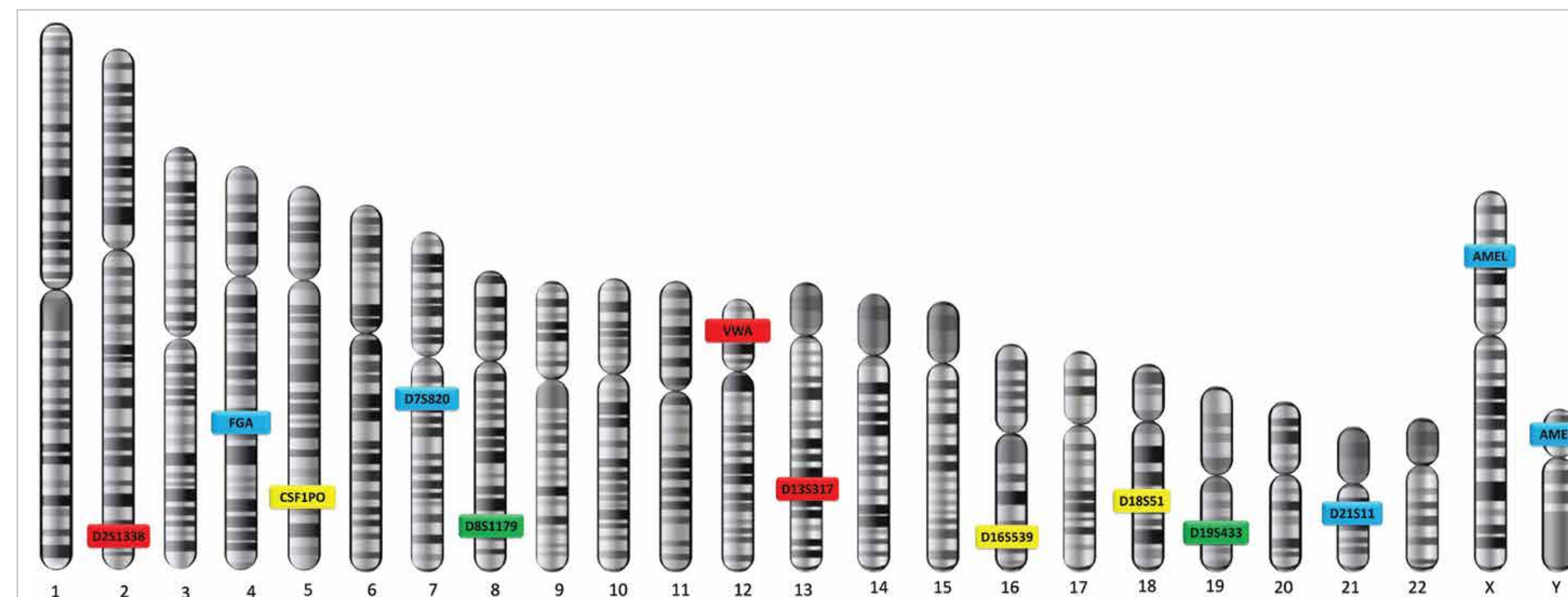


Figure 2. Chromosomal locations of GT Detector Paleo markers

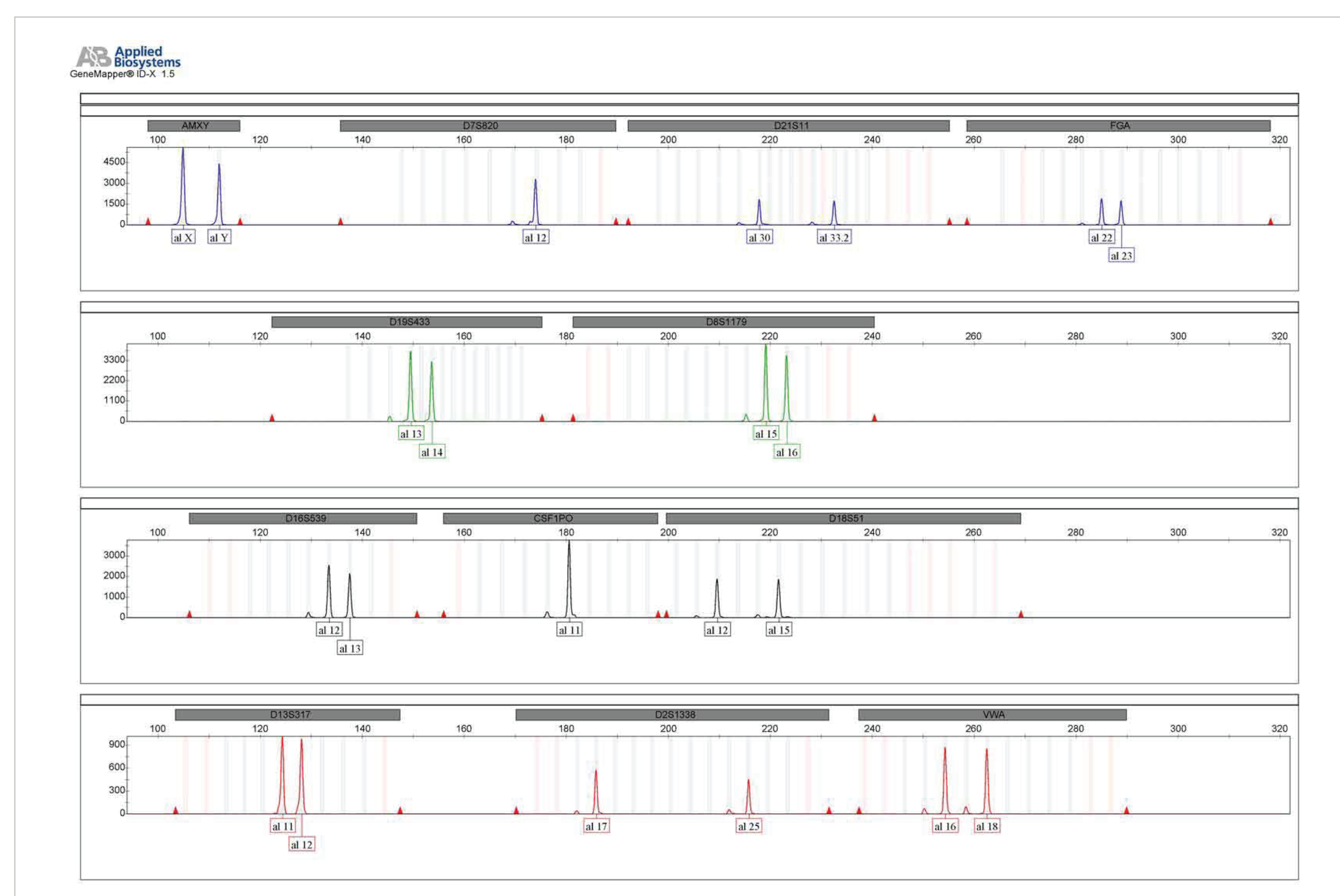


Figure 3. A profile of the Control DNA provided with GT Detector Paleo. One ng of DNA has been amplified using the kit.

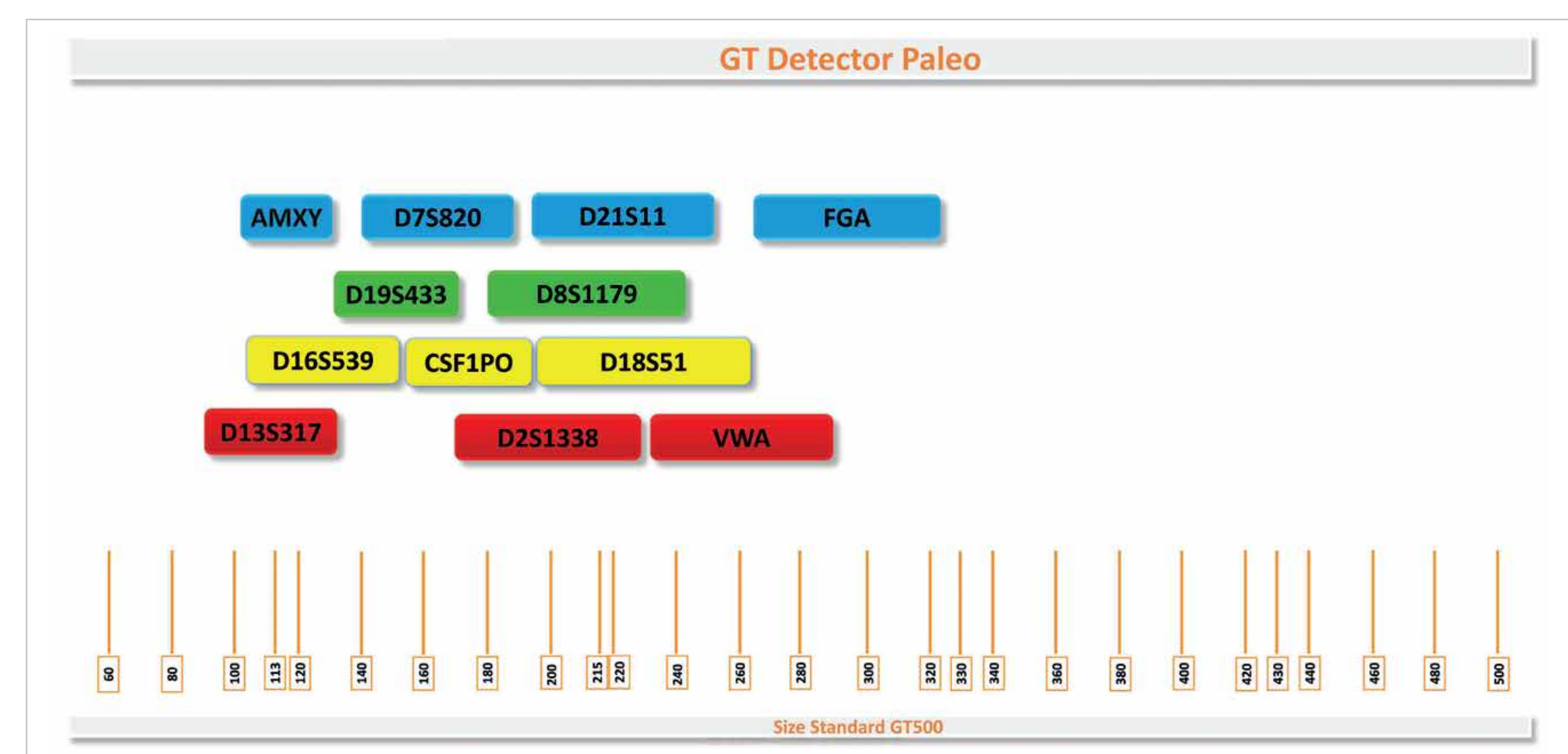


Figure 1. Map of GT Detector Paleo markers

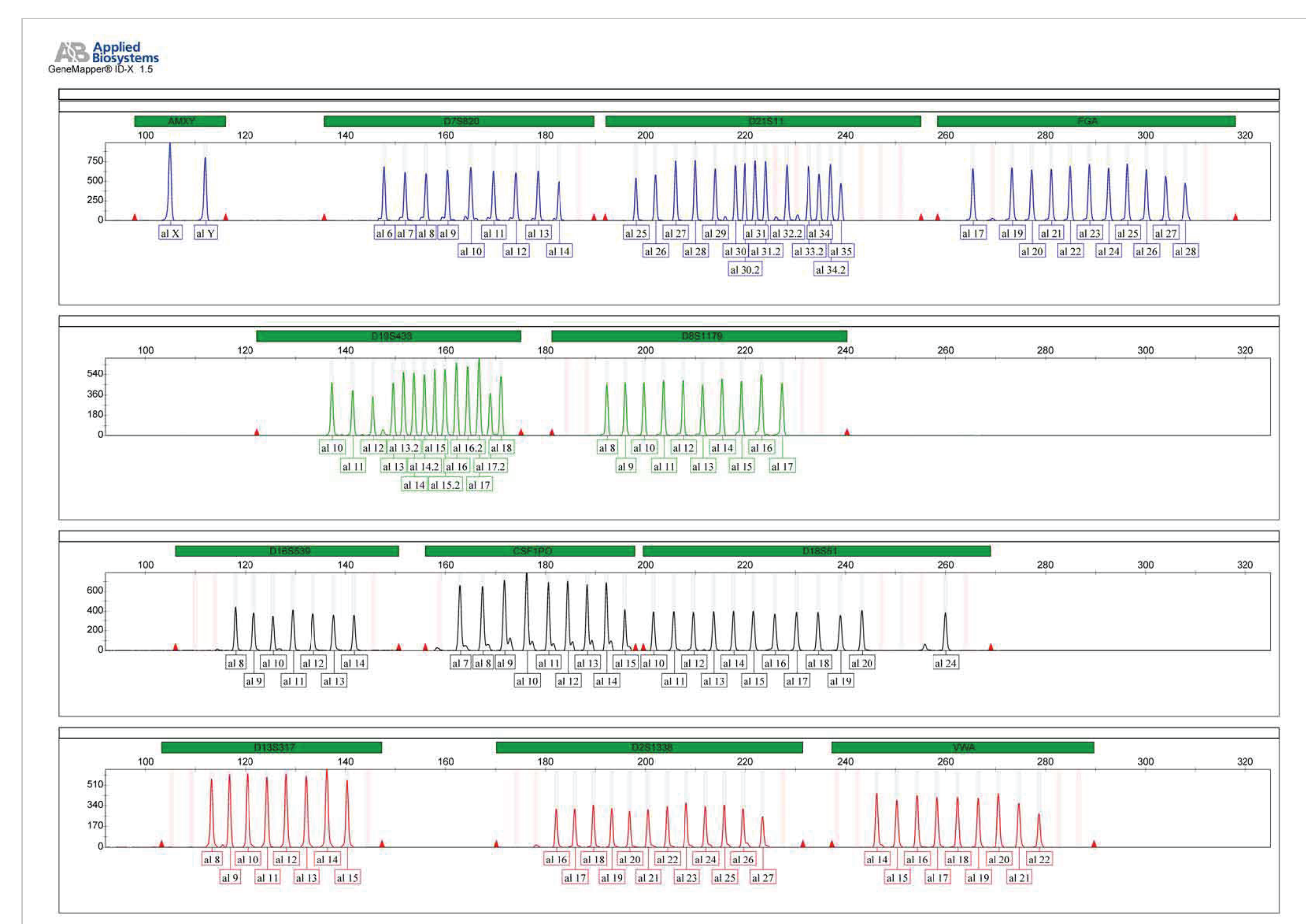
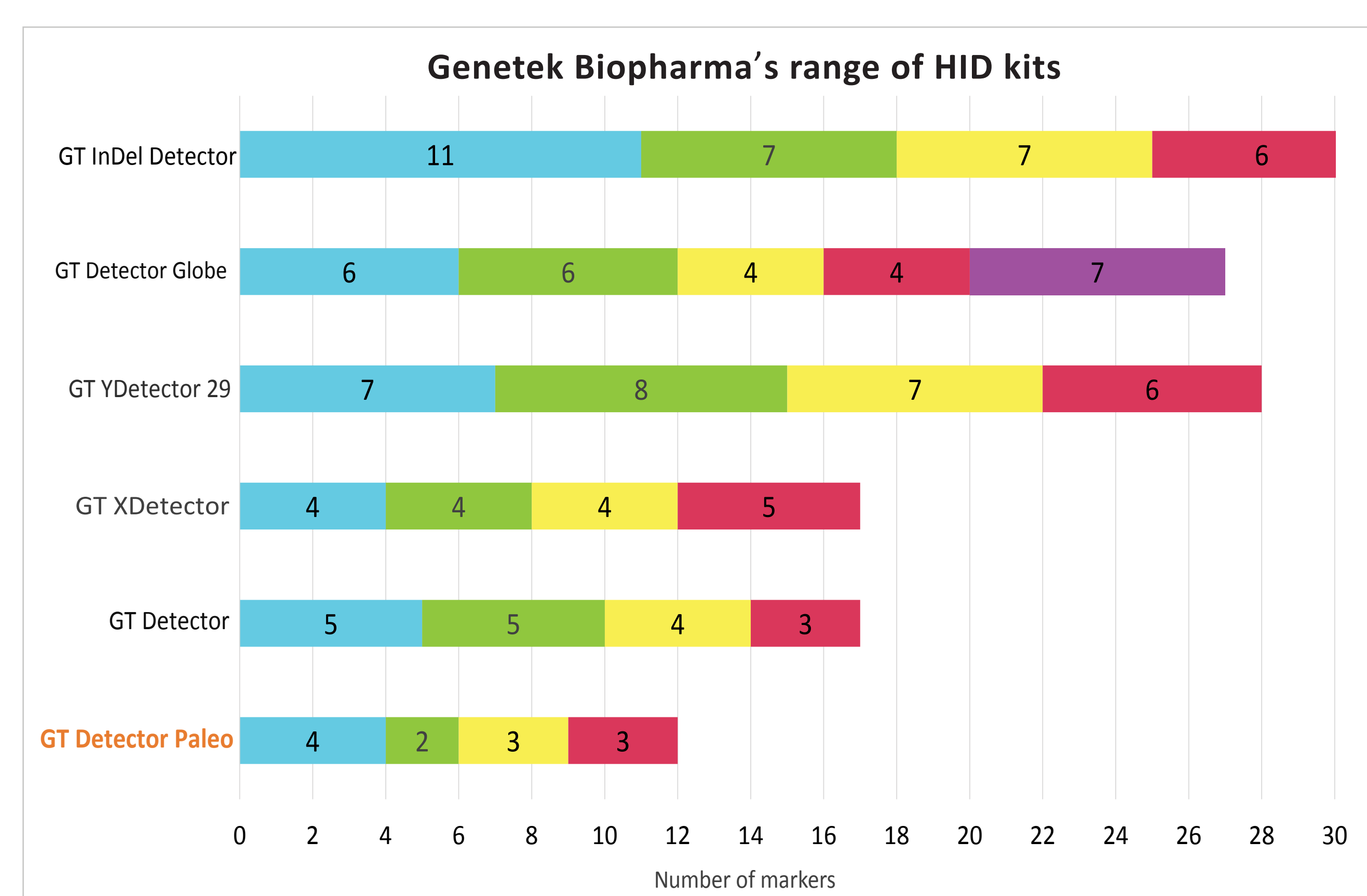


Figure 4. GT Detector Paleo allelic ladder



For Research Use Only

For further information please contact us via [info@genetek.de](mailto:info@genetek.de)

More details on Genetek products are available on our website: [www.genetek-biopharma.com](http://www.genetek-biopharma.com)